

# Do you have X-linked hypophosphatemia?

If you are 18 or older, you may be eligible  
to participate in a research study!

## Hearing and balance assessment of X-linked hypophosphatemia?

We are investigating the link between X-linked hypophosphatemia and an inner ear disorder known as Meniere's disease.

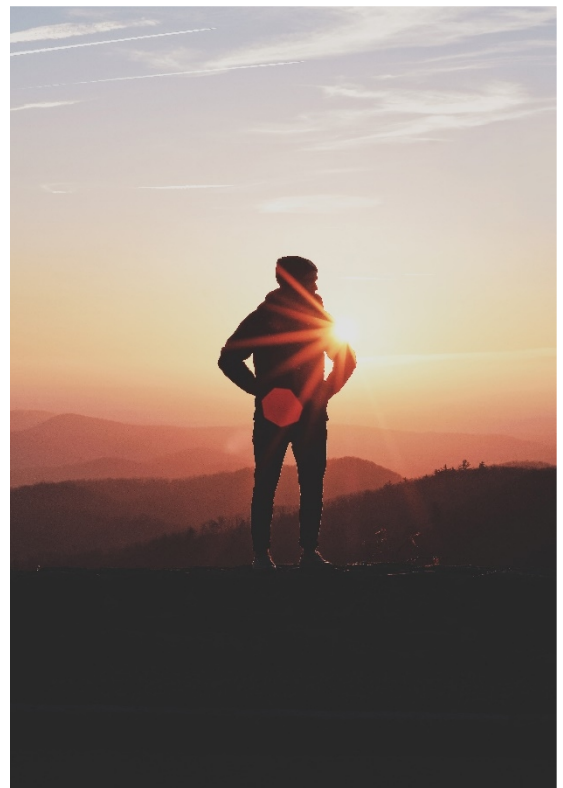
### Location and Duration

- If you decide to join this research study, it will take you **1** study visit to **Massachusetts Eye and Ear**. The study visit will take approximately **5 hours** to complete.

### Tests performed

- Hearing test
- Balance test
- CT scan of the inner ear
- Blood test

**You may be compensated for your time!**



If you are interested, call or  
email a member of the study  
team:

Principal Investigator:  
[Divya\\_Chari@meei.harvard.edu](mailto:Divya_Chari@meei.harvard.edu)

612-747-6308